



GAT MONTHLY MEMBERSHIP PROGRESS REPORT

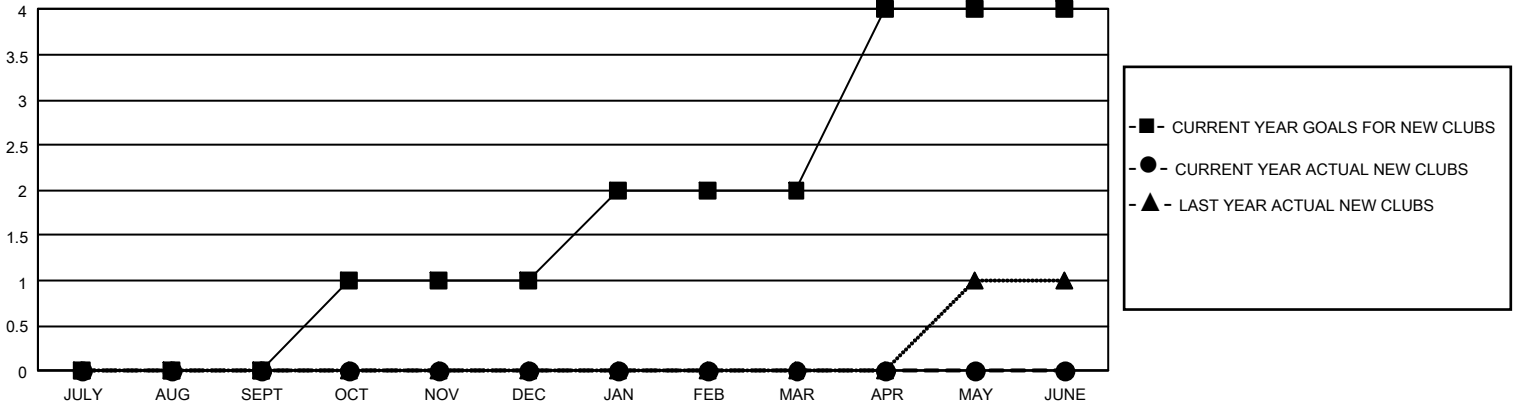
Results as of: 12/31/2022

GMT Constitutional Area 8, Group C

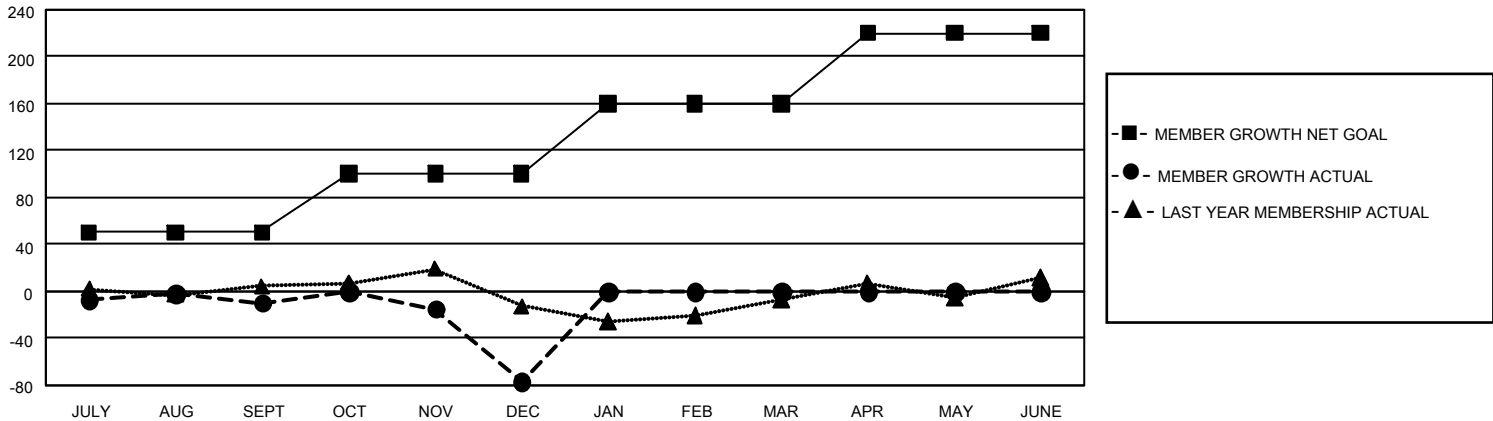
REPORT DOES NOT INCLUDE CLUBS IN UNDISTRICTED AREAS.

| Clubs | | | | Members | | | |
|-----------------------|---------------|-----------|---------------|-----------------------|------------------------|----------------------|--|
| RESULTS FOR 2022-2023 | | | | RESULTS FOR 2022-2023 | | | |
| QUARTER | NEW CLUB GOAL | NEW CLUBS | DROPPED CLUBS | QUARTER | MEMBER GROWTH NET GOAL | MEMBER GROWTH ACTUAL | DROPPED MEMBERS ACTUAL (including transfers) |
| JULY/AUG/SEPT | 0 | 0 | 0 | JULY/AUG/SEPT | 50 | 73 | 70 |
| OCT/NOV/DEC | 3 | 0 | 0 | OCT/NOV/DEC | 50 | 58 | 115 |
| JAN/FEB/MAR | 3 | 0 | 0 | JAN/FEB/MAR | 60 | 0 | 0 |
| APR/MAY/JUNE | 6 | 0 | 0 | APR/MAY/JUNE | 60 | 0 | 0 |

GOALS AND ACTUAL NEW CLUBS CUMULATIVE



GOALS AND ACTUAL MEMBERS CUMULATIVE



| | | | |
|------------------------|---|---------------------------------|----------------|
| DROPPED CLUBS: 0 | 46 CLUBS OF 122 ADDED 1 OR MORE NEW MEMBERS | <u>GENDER DISTRIBUTION</u> | |
| <u>DROPPED MEMBERS</u> | | MALE | 1,019 (52.91%) |
| DECEASED | 17 | FEMALE | 907 (47.09%) |
| CLUB CANCELLED | 0 | NON BINARY | 0 (0.00%) |
| OTHER | 168 | PREFER NOT TO ANSWER | 0 (0.00%) |
| TOTAL | 185 | TOTAL FAMILY UNIT MEMBERS | 505 |
| | CLICK HERE FOR CUMULATIVE MEMBERSHIP DATA | FAMILY MEMBERS PAYING HALF DUES | 261 |